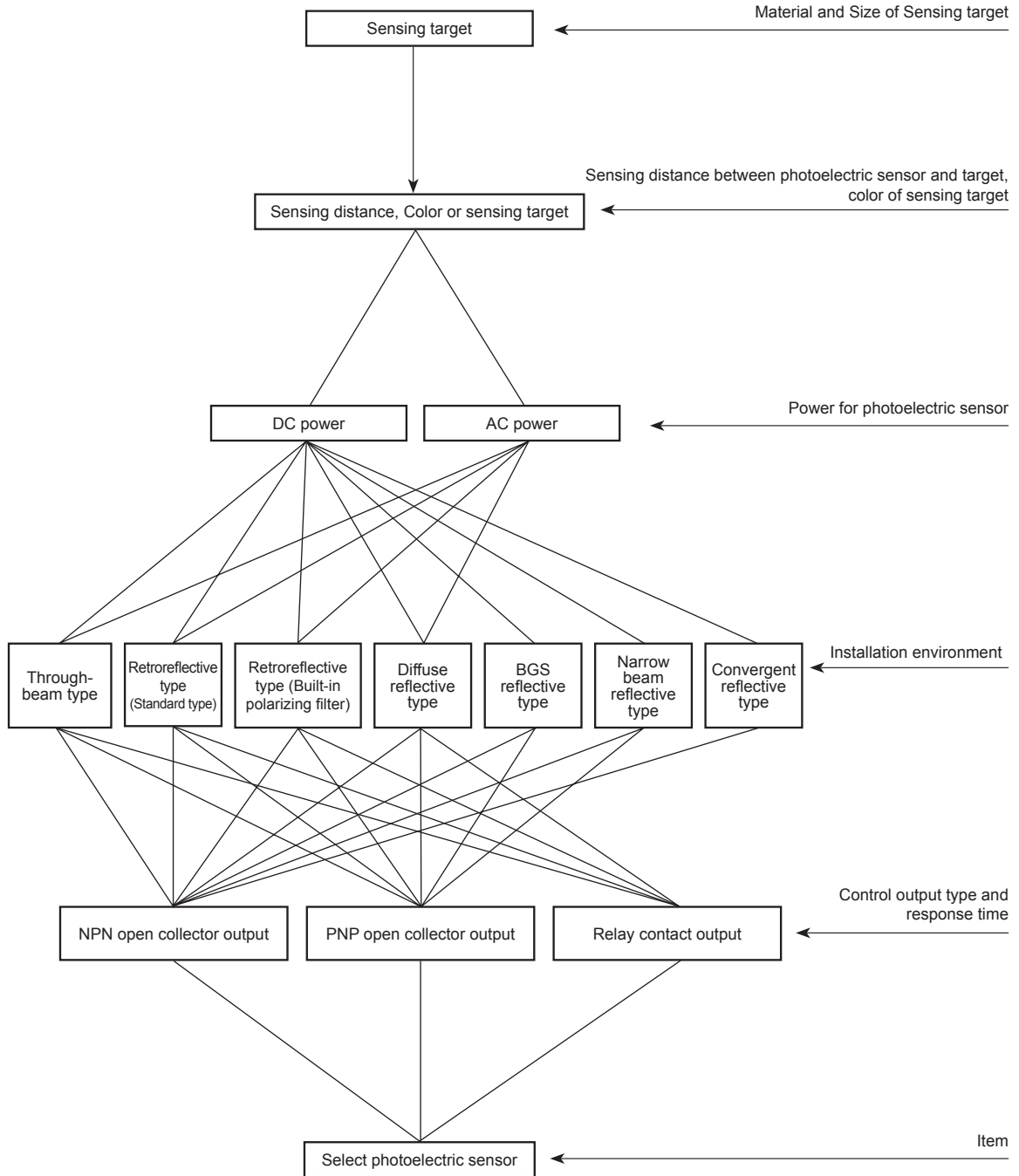


Photoelectric Sensor Selection

■ Selection Method For Photoelectric Sensor



Ordering Information

Ordering Information (Photoelectric Sensor)

BEN 10 M - T F R [] - [] - [] - **P**

Item: BEN, 10, M, T, F, R, [], [], [], P

Labels: NPN/PNP, Connection type, Timer, Diffuse/Narrow beam type, Emitter/Receiver, Control output, Power supply, Sensing type, Sensing distance unit, Sensing distance

P	PNP open collector output
No mark	NPN open collector output
No mark	Cable type
C	Connector type
T	Built-in Timer
No mark	Standard type
No mark	Reflective type (Diffuse type)
N	Narrow beam type (BR, BRP Series only)
1	Emitter
2	Receiver
R	Contact output (Relay)
T	Solid-state output (Transistor)
D	DC power
F	Power supply built-in
S	Adjuster included (BUP Series only)
D	Diffuse reflective type
M	Retroreflective type (Standard type)
P	Retroreflective type (Built-in polarizing filter)
T	Through-beam type
Number	Sensing distance (BUP Series only)
M	Sensing distance unit : m
No mark	Sensing distance unit : mm
Number	Sensing distance
BX	
BEN	
BA	
※1 BPS	
※1 BM/BMS	Photoelectric sensor Series
※1 BR/BRP	
※1 BUP	
※1 BY/BYS	
BYD	

Item: BPS, BM/BMS, BR/BRP, BUP, BY/BYS, BYD

※1: 'S' represents lateral sensing type.
'P' represents plastic case type.

BJN 50 [] - **N D T** [] - [] - **P**

Item: BJN, 50, [], N, D, T, [], [], P

Labels: NPN/PNP, Connection type, Emitter/Receiver, Operation mode, Control output, Power supply, Sensing type, Sensing distance unit, Sensing distance

P	PNP open collector output
No mark	NPN open collector output
No mark	Cable type
C	Connector type
1	Emitter
2	Receiver
L	Light ON
D	Dark ON
No mark	Mode switching
T	Solid-state output (Transistor)
D	DC power
D	Diffuse reflective type
P	Retroreflective type (Built-in polarizing filter)
T	Through-beam type
N	Narrow beam reflective type
B	BGS reflective type
L	Convergent reflective type
M	Sensing distance unit : m
No mark	Sensing distance unit : mm
Number	Sensing distance
BJ	Small long sensing distance photoelectric sensor
BJN	Micro-spot photoelectric sensor
BJG	Transparent sensing photoelectric sensor
BTS	Ultra-compact amplifier built-in type
BTF	Ultra-thin photoelectric sensor
BRE	Cylindrical long sensing distance photoelectric sensor

Item: BJ, BJN, BJG, BTS, BTF, BRE

※ [] This information is intended for product management of through-beam type models. It is not required when ordering a model.
 ※ This ordering information is only for reference. For ordering a specific model, check the ordering information of the model.
 ※ There is no photomicro sensor (BS5 Series) and liquid level sensor (BL Series) in this ordering information.

(A) Photoelectric Sensors

(B) Fiber Optic Sensors

(C) Door/Area Sensors

(D) Proximity Sensors

(E) Pressure Sensors

(F) Rotary Encoders

(G) Connectors/Sockets

(H) Temperature Controllers

(I) SSRs / Power Controllers

(J) Counters

(K) Timers

(L) Panel Meters

(M) Tacho / Speed / Pulse Meters

(N) Display Units

(O) Sensor Controllers

(P) Switching Mode Power Supplies

(Q) Stepper Motors & Drivers & Controllers

(R) Graphic/Logic Panels

(S) Field Network Devices

(T) Software